

ATTENTION:

Cavity units are not load bearing.

When installing a cavity frame it is important that the track is fixed to a structural member. Pack and screw through centre of track using the counter sunk holes provided.

Stud opening size is tight, please allow extra space for packing when preparing the opening.

Standard clearance under door 10mm to 20mm.

Components supplied with Cavity Frame:

- 1 x Aluminium Head Board/Track
- 2 x Timber Cover Strips
- 1 x Pair of Guide Strips
- 1 x Closing Jamb (if required)

Component Pack including:

- 2 x Rollers
- 2 x Brackets
- 2 x Guide Fingers
- 1 x Track Insert
- 1 x Spanner
- 4 x Cup Washers (cover strips)
- 4 x 10G, 40mm Countersunk Screws (cover strip screws)
- 8 x 10G, 40mm Hex Head Screws (mounting plate screws)
- 3 x 10G, 40mm Countersunk Screws (upward track fixing screws)
- 2 x 10G, 16mm Screws (guide finger screws)
- 8 x 8G, 20mm Button Head Screws (Aluminium Head Board/Track fixing screws)
- 1 x 10G, 40mm Countersunk Metal Cuter Screw (track insert)
- 30 x Brads



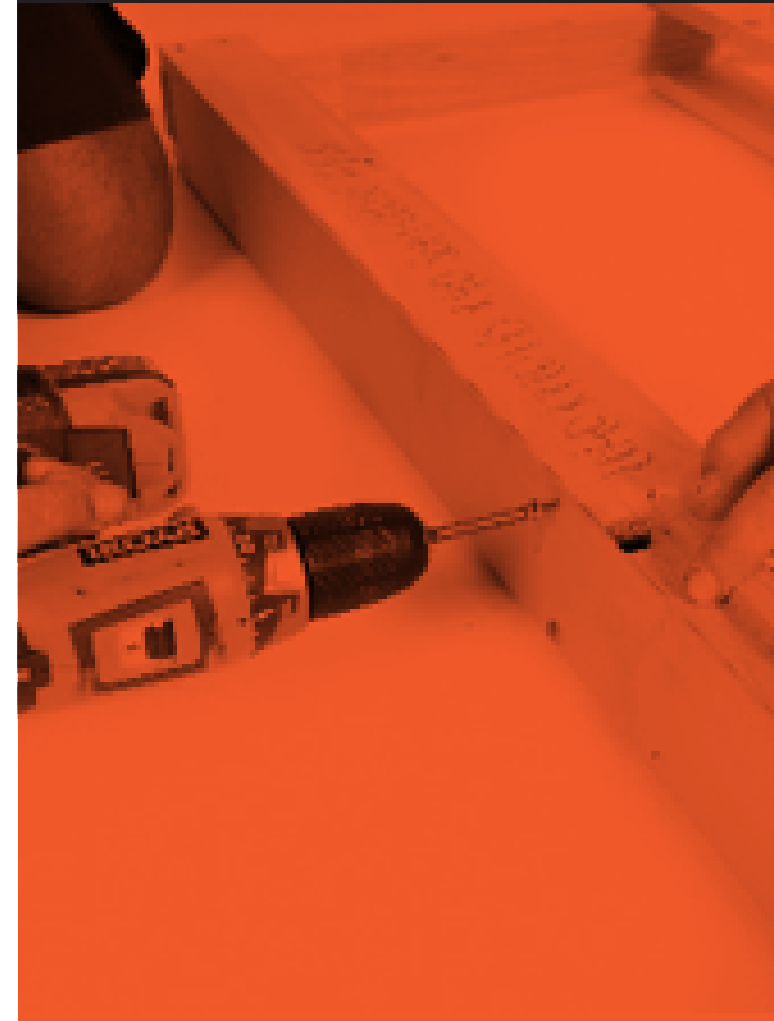
Sliding Door Pockets (Holdings) Pty
Ltd Trading as Joey Cavity Frames
ABN: 59 819 811 200

33 Cameron St Cranbourne 3977

P: (03) 5990 1777

F: (03) 5998 4595

www.joeycavityframes.com.au



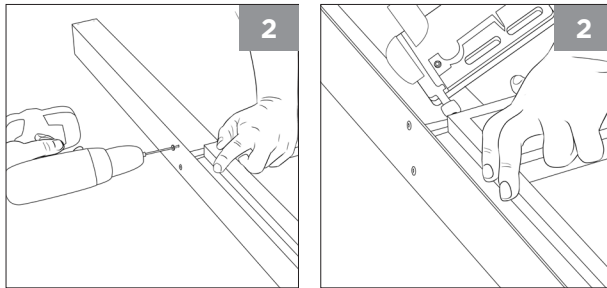
JOEY FAST FIX
Installation Instructions

STEP 1

Disassemble packed unit and inspect for damage. **Important - check that the track is free from damage, debris and dust. Pass rollers through the track to ensure that they are running smoothly.**

STEP 2

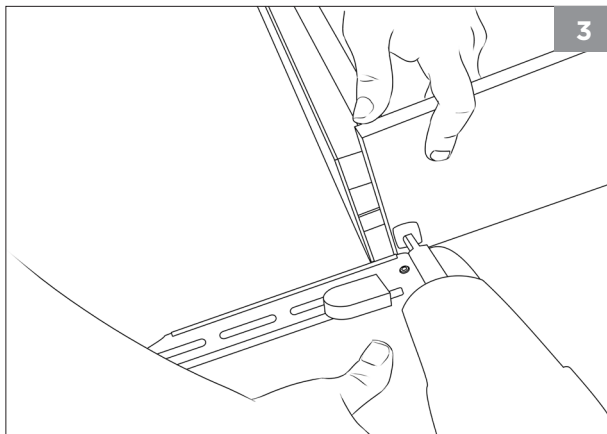
Remove the top spacing ply then fit and screw the head track assembly to the cavity pocket. Do not remove the temporary spacing blocks until the wall sheeting has been completed.



STEP 3

Fix the closing jamb to the head section, fixing through the closing jamb into timber reveal.

Note: no closing jamb provided with plaster reveal units.



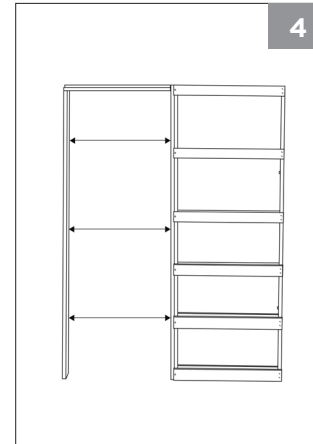
STEP 4

Stand the assembled cavity unit into the prepared frame opening, (pack under cavity unit if required for additional clearance under door).

Make sure the split jambs and aluminium headboard/track are square, and that the frame is plumb and level without twist. Then fix through back post of cavity unit into the stud work. A minimum of four fixings are required, fasten the base to the floor.

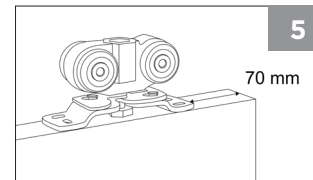
Level the aluminium head board/track, pack and fix through the track into the stud work. Fix the closing jamb ensuring it is equally spaced from split jambs at the top, middle and bottom.

If installing plaster reveal, ensure split jamb is equally spaced to stud work top, middle and bottom.



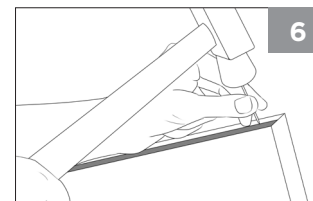
STEP 5

Mount the hanging brackets in the **centre** of the door, 70mm from each end of the door.



STEP 6

Attach guide strips to bottom of door with brads provided, ensuring the wide rippled edge is under the door, fixings at 100mm apart.



STEP 7

Check that no nails, screws or other obstructions that may damage the door are protruding into the cavity. **IF INSTALLING JOEY SOFT CLOSE PLEASE SEE SOFT CLOSE INSTRUCTIONS AT THIS POINT. IF NOT, CONTINUE TO STEP 8.**

STEP 8

Place rollers inside track and adjust the bolt to enable assembly onto fast fix bracket. Angle the door into the cavity. Slip the rear roller bolt into the slot of the fast fix bracket, door will easily clip into place, repeat for front roller. Adjust bolts to ensure door closes flush to closing jamb. The door can be adjusted up or down without the door being removed.

STEP 9

Place track insert into end of aluminium headboard/track and fix with screw provided. Fit the Cover Strips with the screws and cup washers supplied to enable later removal if service or door adjustment is required.

STEP 10

Once door is adjusted to working height, screw guide fingers to the face of split jambs in line with the guide strips previously attached to bottom of door in step 6. Adjust guide fingers to ensure door is centred.

