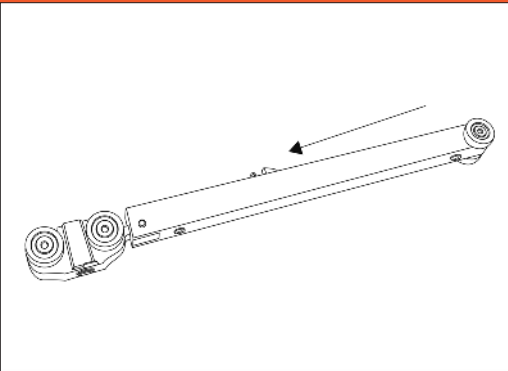


ATTENTION:

Joey Soft Close is available to suit 15kg, 30kg, 50kg & 70kg doors. It is important to ensure the Soft Close specifications are correctly matched to the weight of the door.

The Soft Close comes attached to the leading roller. Before commencing installation it will need to be activated by pushing the catch towards the roller until it clicks into place, as shown below. Once this has been completed, continue on to the relevant set of instructions contained in this guide.

Note: If you are installing a double unit, please refer to the specific double soft close instructions included in this guide.



**WATCH THE
INSTRUCTIONAL
VIDEO ONLINE AT**

JOEYCAVITYFRAMES.COM.AU/VIDEOS



Sliding Door Pockets (Holdings) Pty
Ltd Trading as Joey Cavity Frames
ABN: 59 819 811 200

33 Cameron St Cranbourne 3977

P: (03) 5990 1777

F: (03) 5998 4595

www.joeycavityframes.com.au

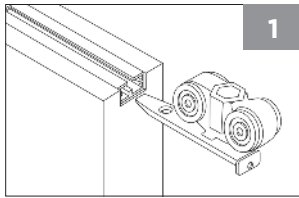


JOEY SOFT CLOSE
Installation Instructions

JOEY ZERO SOFT CLOSE SINGLE UNIT

STEP 1

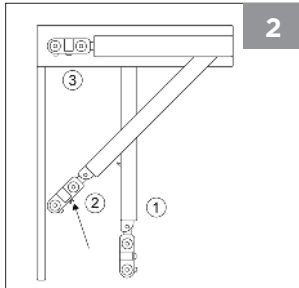
Place the rear roller into the track. Slide the door onto the spear of the rear roller as shown in Diagram 1 and fix off. Angle the door into the cavity and gently push the door back into cavity.



Position rear roller in the hole closest to the edge of door.

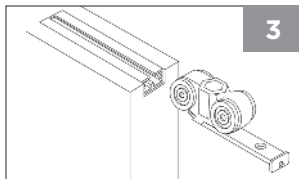
STEP 2

Feed the leading roller with the activated Soft Close into track as shown in Diagram 2.



STEP 3

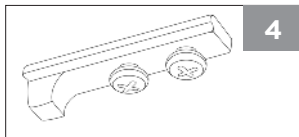
Insert the front spear into the bracket as shown in Diagram 3 and fix off. Adjust bolts to ensure the door closes flush to jamb.



Position leading roller in the hole furthest from edge of door.

STEP 4

Insert the trigger into the channel at the top of the track with the stepped end facing away from the closing jamb. Place the trigger 230mm from the closing jamb to the stepped end of the trigger.



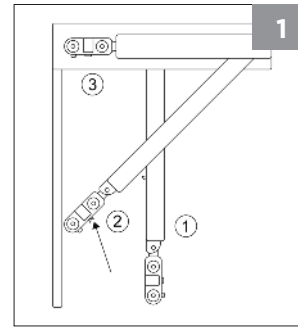
STEP 5

Close the door and check that it is hard against the closing jamb. The trigger may need some small adjustment if there is a gap between the door and the closing jamb.

JOEY FAST FIX SOFT CLOSE SINGLE UNIT

STEP 1

Place the rear roller into the track first, followed by the leading roller with the activated Soft Close attached.

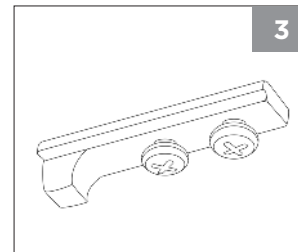


STEP 2

Angle the door into the cavity. Slip the rear roller bolt into the slot of the Fast Fix bracket. The door will easily clip into place. Repeat this process for the front roller. Adjust the bolts to ensure the door closes flush to the closing jamb.

STEP 3

Insert the trigger into the channel at the top of the track with the stepped end facing away from the closing jamb. Place the trigger 250mm from the closing jamb to the stepped end of the trigger.



STEP 4

Close the door and check that it is hard against the closing jamb. The trigger may need some small adjustment if there is a gap between the door and the closing jamb.

JOEY SOFT CLOSE DOUBLE UNIT

STEP 1

For the left-hand side, insert the rear roller first and slide along. Insert the roller attached to the Soft Close, roller end first, into the right-hand side of the track followed by the Soft Close wheels. Slide the Soft Close and roller back to the left side.

STEP 2

For the right-hand side, insert the rear roller first and slide along. Insert the roller attached to the Soft Close, roller end first, into the left-hand side of the track followed by the Soft Close wheels. Slide the Soft Close and roller back to the right side.

STEP 3

Insert the triggers into the channel at the top of the track, with the stepped ends facing away from centre of the track. The trigger will need to be 230mm from the centre of the track to the stepped end of the trigger for Joey Zero, and 250mm from the centre of the track to the stepped end of the trigger for Joey Fast Fix.

STEP 4

Attach doors as per the instruction brochure for the Joey Fast Fix or Joey Zero unit. Continue with all the remaining steps detailed in the relevant instruction document.